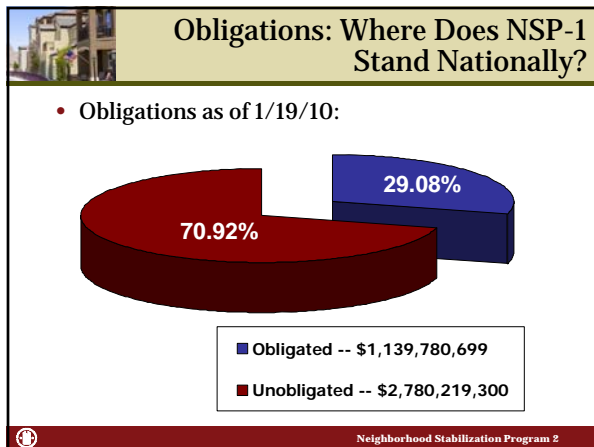


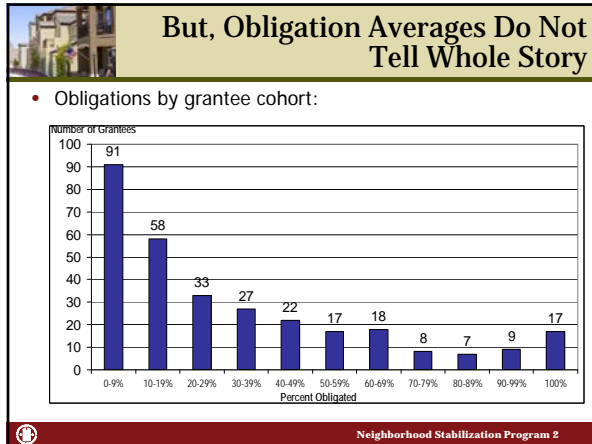
Lessons Learned from NSP1

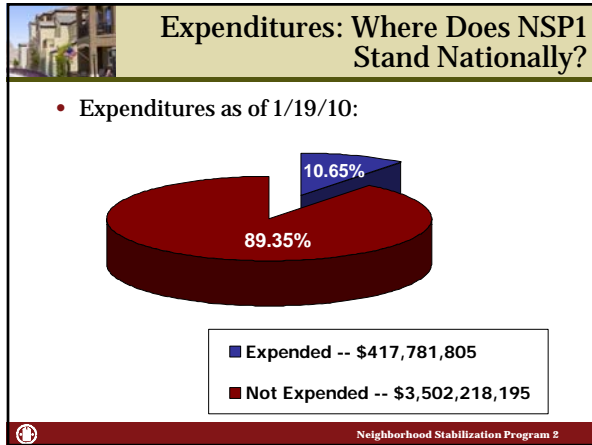
- Panel Participants
 - Gary Bachman, Pima County, AZ
 - John Carpenter, Philadelphia, PA
 - Beth D. Truby, Denver, CO
 - Shelly Landry-Bayle, Santa Ana, CA
- Facilitator
 - Marsha Tonkovich, ICF International

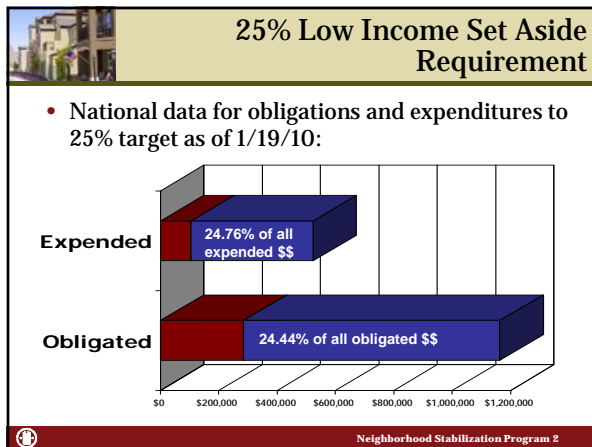
U.S. Department of Housing and Urban Development Neighborhood Stabilization Program 2 2













Lessons Learned During NSP1

- What challenges did you face in setting up your program?
- What tools, resources and procedures did you find helpful?
- What partnerships have you formed to implement NSP1?
- What type of program are you planning to do for NSP2?
- What is your best advice for NSP2 grantees?



Neighborhood Stabilization Program 2

